




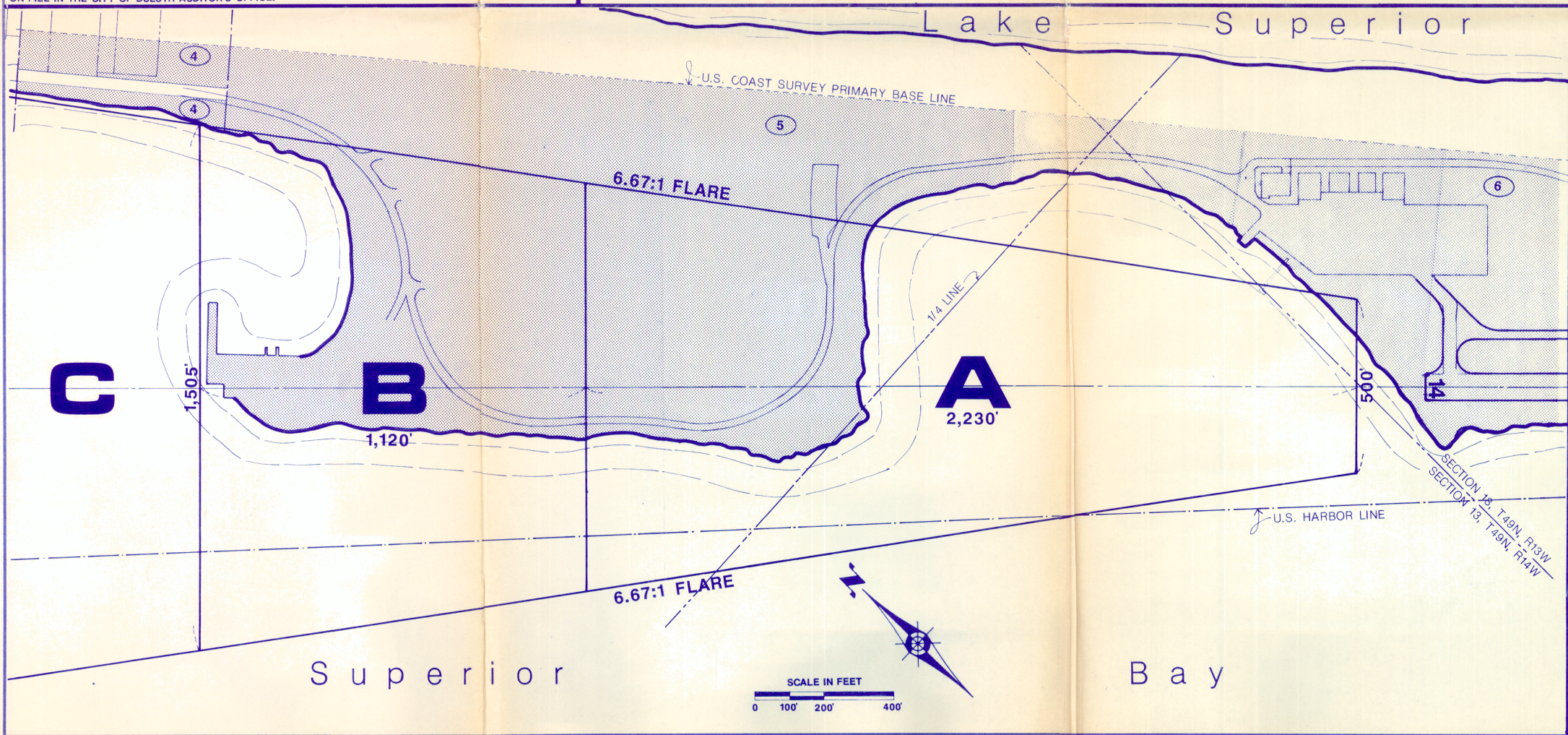
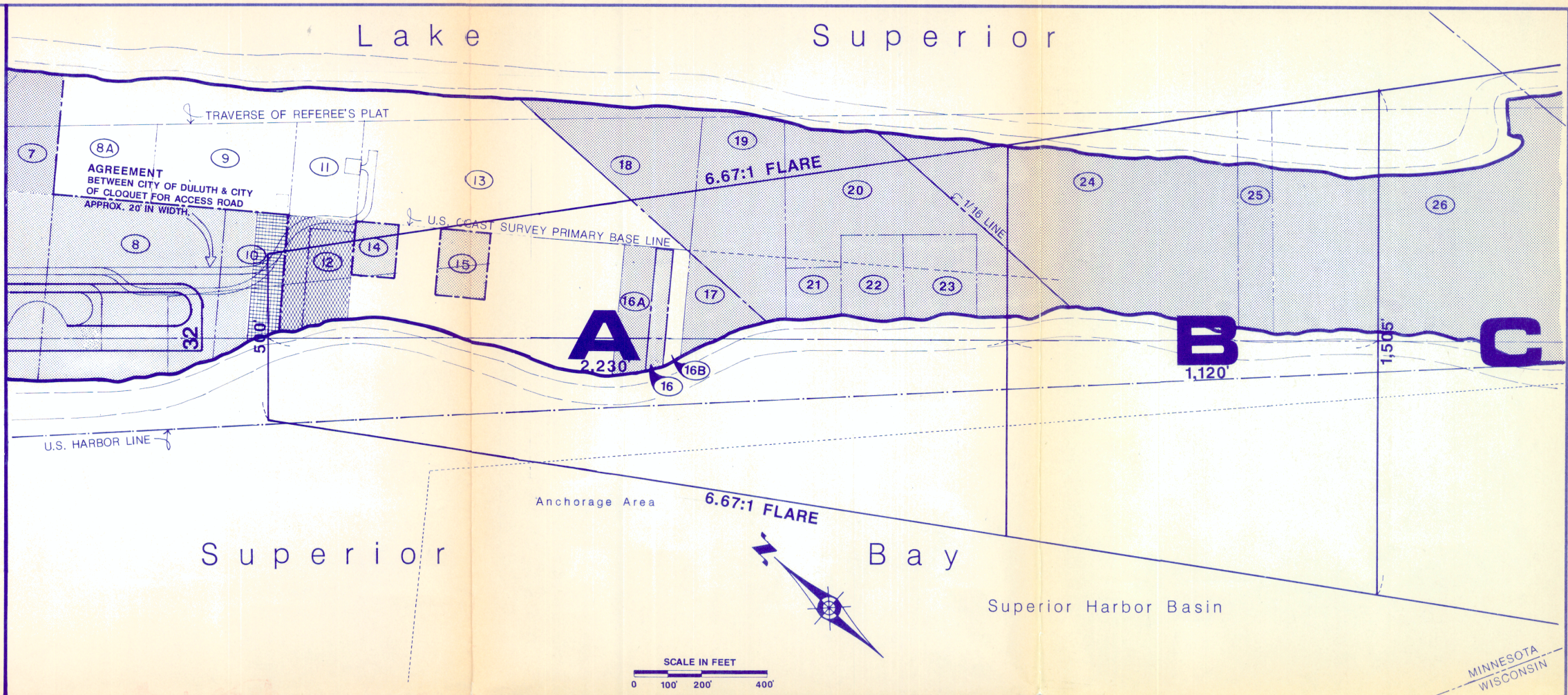
- LEGEND -

-  CITY OF DULUTH PROPERTY
-  EASEMENT (AVIATION)
GRANTED TO CITY OF DULUTH FROM SUPERIOR WATER,
LIGHT & POWER CO.
-  UTILITY EASEMENT
GRANTED TO CITY OF CLOQUET FROM CITY OF DULUTH.

PROPERTY OWNERSHIP

CITY OF DULUTH, PARCELS - 4, 5, 6, 7, 8, 10, 14, 15, 16,
17, 18, 19, 20, 21, 22, 23, 24, 25 & 26.
CITY OF SUPERIOR, PARCELS - 8A, 9, 11, 13, 16A & 16B.

BASE MAP & OWNERSHIP INFORMATION FROM RECORDS
ON FILE IN THE CITY OF DULUTH AUDITOR'S OFFICE.



NOTE:

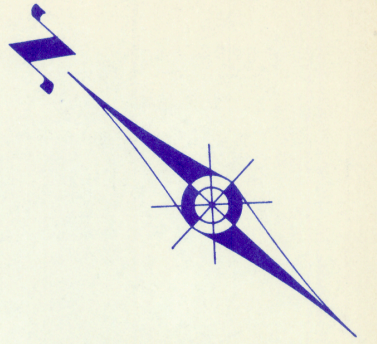
DIMENSIONS OF LAND USE SAFETY ZONES BASED UPON
AN ULTIMATE NON PRECISION INSTRUMENT RUNWAY 3,350'
IN LENGTH WITH VISIBILITY MINIMUMS GREATER THAN 3/4
STATUTE MILE.

DATE OF ENACTMENT : **PRELIMINARY**
EFFECTIVE DATE :

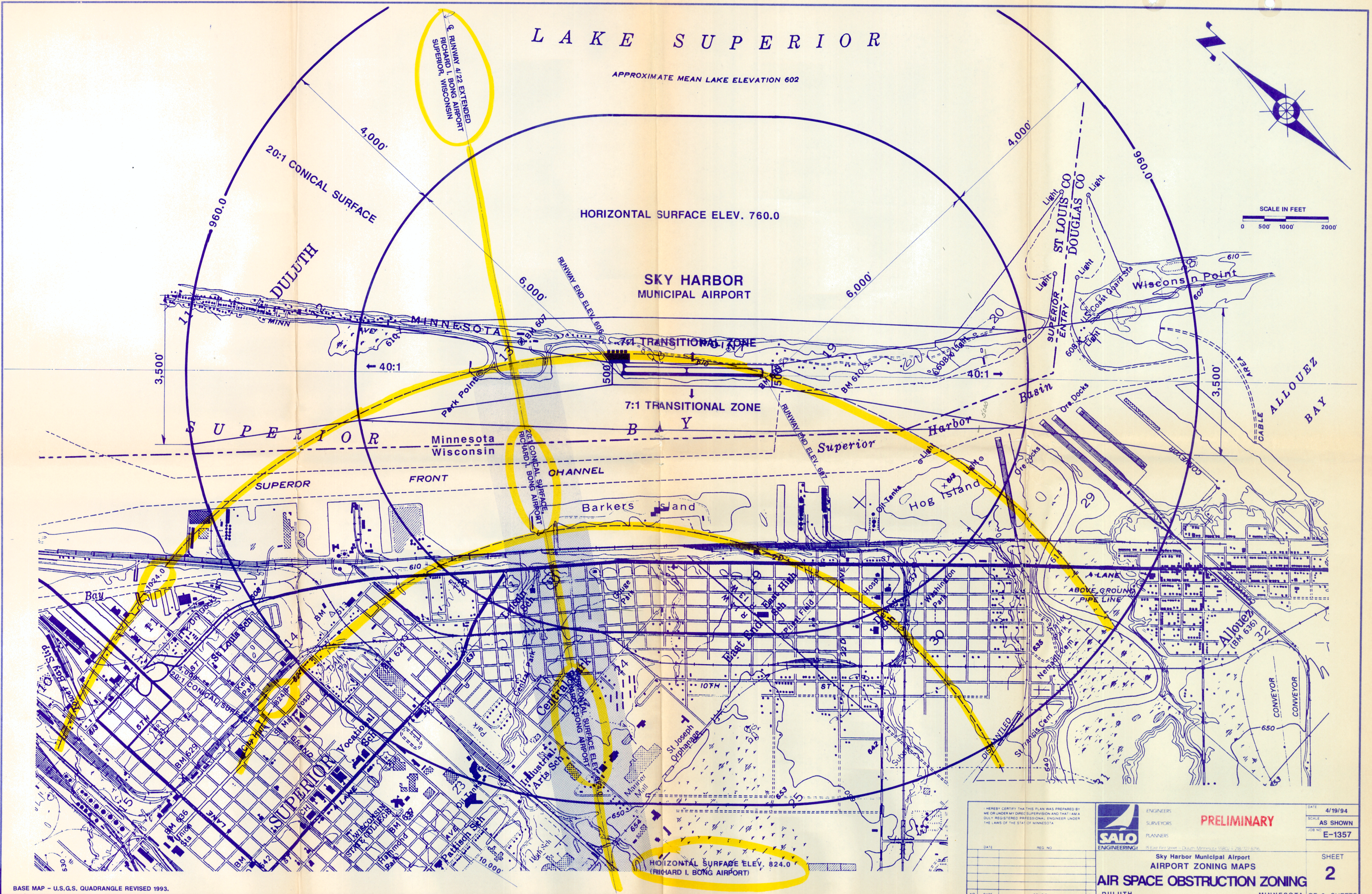
<small>HEREBY CERTIFY THAT THIS PLAN WAS PREPARED BY ME OR UNDER MY DIRECT SUPERVISION AND THAT I AM A DULUTH REGISTERED PROFESSIONAL ENGINEER UNDER THE LAWS OF THE STATE OF MINNESOTA.</small>		 ENGINEERS SURVEYORS PLANNERS <small>16 East First Street - Duluth, Minnesota 55802 - (218) 722-8700</small>	DATE: 4/19/94
NO.	DATE		REVISION
Sky Harbor Municipal Airport AIRPORT ZONING MAPS LAND USE SAFETY ZONES			JOB NO: E-1357
DULUTH			SHEET 1
MINNESOTA			OF 2 SHEETS

LAKE SUPERIOR

APPROXIMATE MEAN LAKE ELEVATION 602



SCALE IN FEET
0 500' 1000' 2000'



BASE MAP - U.S.G.S. QUADRANGLE REVISED 1993.

HEREBY CERTIFY THAT THIS PLAN WAS PREPARED BY ME OR UNDER MY DIRECT SUPERVISION AND THAT I AM A DULY REGISTERED PROFESSIONAL ENGINEER UNDER THE LAWS OF THE STATE OF MINNESOTA.



ENGINEERS
SURVEYORS
PLANNERS

PRELIMINARY

DATE 4/19/94
SCALE AS SHOWN
JOB NO. E-1357

DATE	REV. NO.
NO.	DATE

Sky Harbor Municipal Airport
AIRPORT ZONING MAPS

AIR SPACE OBSTRUCTION ZONING

DULUTH MINNESOTA

SHEET
2
OF 2 SHEETS